

GURU GOBIND SINGH PUBLIC SCHOOL ,CHAS

HOLIDAY HOMEWORK

SESSION 2024-2025

CLASS VII

SUB:- MATHEMATICS

Do in Maths Notebook

1. What must be subtracted from -7 to obtain -15?
2. The sum of two integers is -6. If one of them is 2. Find the other.
3. Each side of a square is $17/3$ m long. Find its area.
4. Find :-
 - I) $12/25$ of a litre.
 - II) $5/8$ of a kilogram
 - III) $3/5$ of an hour
5. A bus can cover 64.5 km in an hour. How much distance can it cover in 18 hours?
6. The product of two decimals is 1.824. If one of them is 0.64, find the other.
7. How many pieces of plywood, each 0.45 cm thick, are required to make a pile 2.43 m high?
8. Divide:-
 - I) 43.2 by 6
 - II) 3.28 by 0.5
9. Renu spends $4/5$ of her income on household expenses. Her monthly income is Rs30000. How much does she save every month?
10. Express as rupees using decimals:
 - I) 536 paise
 - II) 65 rupees 78 paise
11. Express in kg using decimals:
 - I) 60g
 - II) 6kg 8g

ACTIVITY (LAB MANUAL)

1. To verify whether a given pair of angles are complementary .
2. To verify whether a given pair of angles are supplementary.

GURU GOBIND SINGH PUBLIC SCHOOL, CHAS

SESSION: 2024-2025

SUMMER HOLIDAY ASSIGNMENT

Class: VII

Subject: Computer

- (1) Read the chapter 1 twice and learn the exercises.
- (2) All works should be done in Computer Copy.
 - a) Write the about the future of AI.
 - b) Write about the features of Operating System.
 - c) Write a short note History of AI and draw the picture of Milestones in the field of Artificial Intelligence



GURU GOBIND SINGH PUBLIC SCHOOL, CHAS

HOLIDAY ASSIGNMENT(2024-25)

CHEMISTRY

CLASS- VII

I. Fill in the blanks:

1. An acid is ----- by a base.
2. Phenolphthalein is an ----- indicator.

II. Choose the correct option -

1. A soap solution is -
(a) Basic (b) Acidic (c) Alkaline (d) None
2. $\text{CO}_2 \div \text{H}_2\text{O}$ -
(a) Sulphuric acid (b) Nitric acid (c) Carbonic acid (d) None

III. Name the following :-

1. Soluble bases.
2. A chemical used as a food preservative.
3. Chemical name of Baking soda

IV. Define the following :-

1. Acid Rain 2. Neutralization Reaction
2. Acid Base Indicator

V. Answer in 40 words -

1. What are the general properties of bases?
2. What are the general properties of Acids?
3. Name an acidic gas which is discharged in to atmosphere on the burning of fuels like coal, petrol and diesel. How is this gas formed?

VI. Write one use of the following-

1. Sulphuric acid
2. Citric Acid
3. Sodium carbonate
4. Ammonium hydroxide
5. Sodium hydrogencarbonate

VII. Learn Question/ Answer of ch-5

VIII . Write all the activities of CH-5 in C.W.COPY.

Note- Do H.H.W in a thin copy

GURU GOBNID SINGH PUBLIC SCHOOL CHAS
SUMMER VACATION ASSIGNMENT (2024-25)

Class VII

SUBJECT BIOLOGY

NOTE-Do all the work in A4 size file paper and staple all the sheets together. Make a front page and mention your details. Don't put the papers in any file.

1. Answer the following questions:

- a) Why do some plants feed on insects?
- b) Algae and fungi form a unique association sharing benefit from each other. What is the name of association between them?
- c) In a plant, photosynthesis occurs in a part other than leaf. Name that plant and the part where photosynthesis occurs.
- d) Sunlight, chlorophyll, carbon dioxide, water and minerals are raw materials essential for photosynthesis. Do you know where they are available? Fill in the



Edit with WPS Office

blanks with the appropriate raw materials.

- Available in the plant:
- Available in the soil:
- Available in the air:
- Available during day :

e) Following image illustrates a yellow thread like plant. What is the mode of nutrition and what is its name?



f) Unscramble the following to form terms related to modes of nutrition

- RASPAEIT
- ROPEHYTSAP
- TOROPHAUT



Edit with WPS Office

iv. SYBIOMSIS

g) Match the organisms given in Column I with their mode of nutrition given in Column II.

| Column I | Column II |
|------------------|------------------------|
| a) Mango tree | i) Insectivorous plant |
| b) Mushroom | ii) Heterotroph |
| c) Pitcher Plant | iii) Autotroph |



d) Cuscuta

iv) Saprophyte

e) Elephant

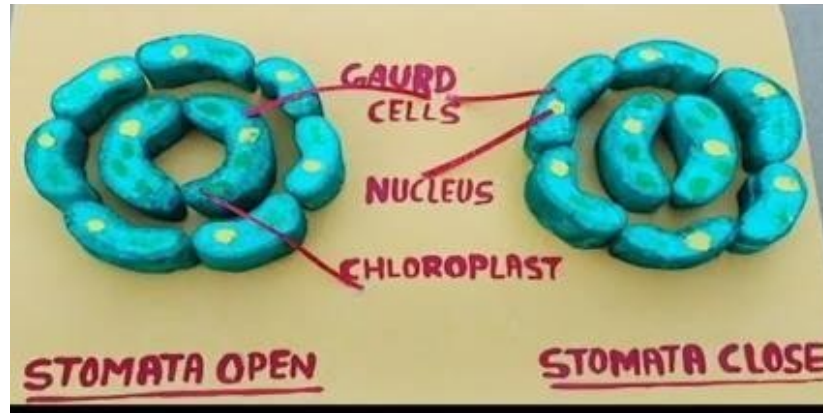
v) Parasitic

2. Make a model of open and closed stomata with the help of cardboard, colour papers etc.

(Note: you can take the help from this picture)



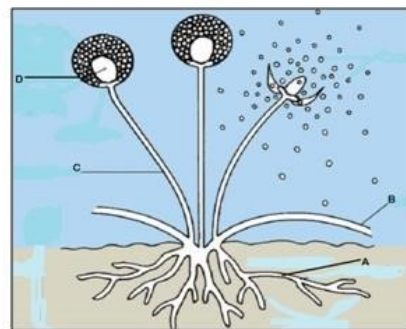
Edit with WPS Office



3. Paste or draw the picture of pitcher plant on A4 sheet and write about its modes of nutrition

4. Draw a colourful well labelled diagram to show the process of photosynthesis

5. Identify and draw the following picture and label it .



Edit with WPS Office



Edit with WPS Office

GURU GOBIND SINGH PUBLIC SCHOOL CHAS

SUMMER HOLIDAY ASSIGNMENT:STD VII

(2024-25)

SUBJECT-PHYSICS

- ✓ **Complete the Holiday Assignment in a separate thin notebook.**
- ✓ **Write questions and answers both.**

Questions-1

What is the most common thing between all the clocks and watches?

Questions-2

Out of the two given clocks, a pendulum clock or a quartz clock. Mention which of the clock between the given ones requires an electric cell for its working?

Question -3.

Name the most ancient unit of time in which it was earlier measured.

Question -4.

State the factors on which the time period of a simple pendulum depend.

Question- 5

List two points of differences between uniform motion and non uniform motion. Also draw the distance-time graph for each. What conclusion do you draw about the speed of objects in both cases.

Value and Competancy Based Questions

Question 1.

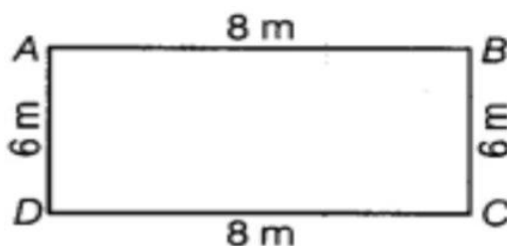
Last Sunday, Priyanka decided to go outside with her family for the dinner in some particular restaurant.

Then, she thought to go through her own car. So, while moving she increased the speed of the car from 36 km/h to 54 km/h. All of sudden, a rickshaw came in front of her car but due to applying of brakes at the right time, both of them got safe from meeting with an accident.
[Value Based Question]

- (a) Calculate the increase in the speed of the car in the terms of m/s.
- (b) Mention two positive actions performed by Priyanka here.

Question 2.

Starting from A, Paheli moves along a rectangular path ABCD as shown in figure. She takes 2 min to travel each side. Plot a distance-time graph and explain whether the motion is uniform or non-uniform.



Question 3

(i) Define simple pendulum and draw its diagram. **Label** below mentioned parts in the diagram

Bob, length of the pendulum, rigid support, mean position, extreme position, amplitude.

(ii). With reference to simple pendulum **Define**: time period, amplitude, frequency and length of the pendulum.

(iii) Name the scientist who has invented simple pendulum. Prepare a **BIOGRAPHY** on him, **Paste** his picture and **mention date of birth as well as date of demise** of that great personality.

Question-4

Identify the following time measuring devices used in ancient time. Mention the name of the place where they are located. Which one of them is the **UNESCO WORLD HERITAGE**.



FIGURE-1.



FIGURE-2

FIGURE-3



The end

Guru Gobind Singh Public School, Chas

Session - (2024-25)

Class - VII

Subject - Social Science

Summer Holiday Assignment

History and Civics

Activity Based Work.

1. Prepare a chart to show some important travellers of Indian Medieval History in a creative way and write few points about their journey.
2. Make a timeline to show the rise of new kingdoms during medieval period in India (reference to lesson - 2). Paste the pictures of the rulers and make your timeline very creative and attractive.
3. Prepare a chart to represent the provisions and measures adopted by Indian government to implement equality in India.

Question-Answer Based Work.

1. Write the different terms used for Indian subcontinent during medieval period.
2. What are court chronicles?
3. Write a short note about anyone prominent social reformer of India and paste his/her picture.

Geography

Activity Based Work.

1. Make a model of the Earth and show the interior structure of the Earth.
2. Make a model of rock cycle. Use clay to show different rocks.

Question-Answer Based Work.

1. Write some causes and prevention of environmental pollution.
2. What is an ecosystem?

Guru Gobind Singh Public School, Chas

Session - (2024-25)

Class - VII

Subject - Social Science

Summer Holiday Assignment

History and Civics

Activity Based Work.

1. Prepare a chart to show some important travellers of Indian Medieval History in a creative way and write few points about their journey.
2. Make a timeline to show the rise of new kingdoms during medieval period in India (reference to lesson - 2). Paste the pictures of the rulers and make your timeline very creative and attractive.
3. Prepare a chart to represent the provisions and measures adopted by Indian government to implement equality in India.

Question-Answer Based Work.

1. Write the different terms used for Indian subcontinent during medieval period.
2. What are court chronicles?
3. Write a short note about anyone prominent social reformer of India and paste his/her picture.

Geography

Activity Based Work.

1. Make a model of the Earth and show the interior structure of the Earth.
2. Make a model of rock cycle. Use clay to show different rocks.

Question-Answer Based Work.

1. Write some causes and prevention of environmental pollution.
2. What is an ecosystem?

Class 7 Holiday Assignment

Sub : English

1. Do you believe in ghosts or in the supernatural power? Narrate a scary experience you have had or a ghost story you have read in the first person narration technique. Supply a suitable title to the story. (Word limit 120)

2. Read a book of your choice and write a review including :
 - Title
 - Main character
 - Plot
 - Theme

3. Write one page cursive writing for fifteen days in your holiday homework notebook.
4. Express your love for your mother on this 'Mother's Day ' by presenting her a card entitled " ALL ABOUT MY MOM".
5. PREPARE a debate on the topic " Influence of social media on student's life " .
6. Perform an asana daily and make a poster of it.

WISHING YOU A VERY HAPPY HOLIDAY!

ग्रीष्मकालीन् अवकाश (वर्ष- 2024-25)

वर्ग-सप्तम्

विषय:- संस्कृत

1. संस्कृत पाठ्यपुस्तक का पाठ संख्या-1,2 का अभ्यास कार्य कॉपी में लिखकर याद करें।
2. शब्दरूप - देव, रमा और मित्र का शब्दरूप लिखकर याद करें।
3. धातरूप- पठ्, खाद्, भू, नम्, और गम् धातु का धातुरूप लट्, लृट् और लङ् लकार में लिखकर याद करें।
4. संस्कृत संख्या 1-30 तक लिखें।
5. चित्र को देखकर मञ्जूषा की सहायता से खाली स्थान को भरें।



मञ्जूषा – विवाहस्य, वरः, जनाः, भोजनं, प्रसन्नाः

- क) एतत् चित्रम् ----- अस्ति।
- ख) अत्र एकः ----- एका वधूः च तिष्ठतः।
- ग) केचन ----- पुष्पवर्षाम् कुर्वन्ति।
- घ) केचन जनाः ----- खादन्ति।
- ङ) सर्वे ----- सन्ति।

6. परियोजना कार्य – I. पेड़ के अन्दर स्त्रीलिङ्ग शब्दों को लिखकर दर्शाए।
II. प्रार्थना पाठ को चार्ट पेपर पर सुन्दर अक्षरों में लिखें।

गुरु गोबिंद सिंह पब्लिक स्कूल, चास
ग्रीष्मकालीन अवकाश कार्य
सत्र - 2024 - 25

कक्षा - सप्तम

विषय - हिन्दी

व्याकरण :-

1. वचन बदलें ----- 5 से 7 तक (पृष्ठ संख्या - 90)
2. लिंग बदलें ----- 7 से 11 तक (पृष्ठ संख्या - 85- 86)
3. पर्यायवाची शब्द लिखें ----- 1 से 36 तक (पृष्ठ संख्या - 27)
4. विलोम शब्द लिखें ----- 1 से 50 तक (पृष्ठ संख्या -30- 31)
5. अनेकार्थी शब्द लिखें ----- 1 से 18 तक (पृष्ठ संख्या - 34)
6. वाक्यांशों के लिए एक शब्द ----- 1 से 20 तक (पृष्ठ संख्या - 39-40)
7. श्रुतिसम भिन्नार्थक शब्द----- 1 से 18 तक (पृष्ठ संख्या - 42- 43)
8. मुहावरे लिखें ----- 1 से 15 तक (पृष्ठ संख्या - 152- 153)
1 से 25 तक (पृष्ठ संख्या - 154-155)

परियोजना कार्य :-

1. 'जल बचाओ अभियान' से संबंधित चित्र बनाकर एवं कुछ नारे लिखकर चार्ट पेपर पर पोस्टर बनायें।
2. 'दीपक' का चित्र बनाकर हुए उससे मिलने वाले संदेश को एक चार्ट पेपर पर लिखें।
3. सर्वनाम एवं उनके भेदों को एक मॉडल बनाकर दर्शायें।

विशेष :-

1. उपर्युक्त व्याकरण के कार्यों को अपनी व्याकरण की कॉपी में साफ, सुंदर एवं स्पष्ट अक्षरों में लिखकर याद करें।
2. परियोजना कार्यों में से किन्हीं दो को अच्छी तरह से बनाएँ।